

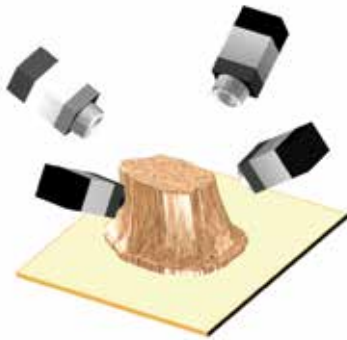
TR7007QI SERIES



- Shadow Free 3D Quad Fringe Projection
- Accurate Optimized Stop-and-Go Design
- Automated SmartWarp Compensation
- 100% Solder Paste Defect Coverage

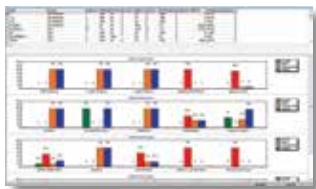
**3D SOLDER
PASTE INSPECTION**

TR7007QI FEATURES

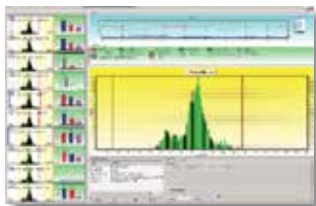


Quad Digital Projectors Ensure Shadow-free Inspection

SPC



Statistical Report



Multi-panel Histogram



Solder Height Distribution



3D Color Image



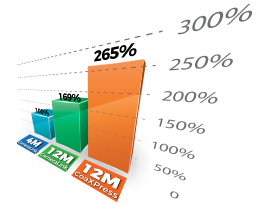
SPC 2D Real Image Query

TR7007QI

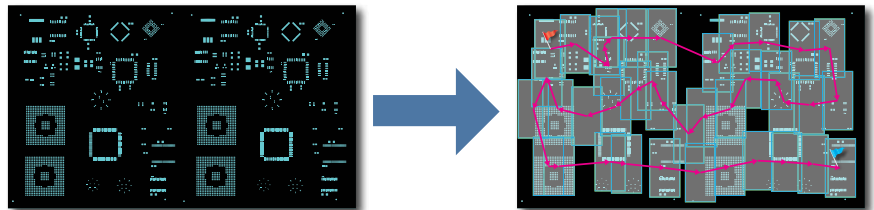
Highly Accurate stop-and-go 3D SPI solution with latest TRI quad/dual digital projector shadow-free technology and inspection route optimization for enhanced inspection performance. Easy programming with innovative software bring maximum value to your production line.

Perfect Accuracy with Optimized Performance

TR7007QI employs TRI's latest 3D projector technology combined with advanced scanning path optimization to achieve best available inspection accuracy while maintaining competitive inspection speed. Choose optional CoaXPRESS upgrade for highest performance.



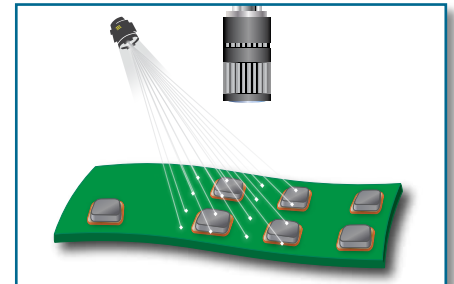
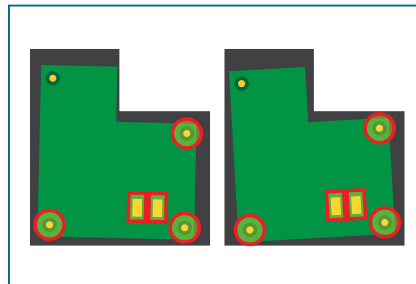
Achieve maximum performance with optional CoaXPRESS upgrade.



TRI's intelligent route optimization reduces the number of FOVs necessary to inspect every board, saving inspection cycle time.

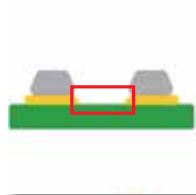
Stable and Reliable Performance

Fully optimized for maximum stability, the TR7007QI delivers reliable inspection results 24 hours a day. Innovative SmartWarp technology automatically compensates for local board warpage and local fiducial marks help eliminate any impact of manufacturing tolerances.

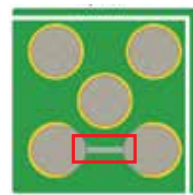


Unique Low Bridge Inspection

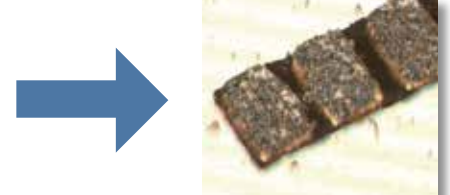
World's first inspection of low solder paste bridges under 30 μm ensures no printing defects are missed, and guarantees accurate results under any conditions.



3D Height Profile cannot reveal low bridges



Top Color View



2D+3D Image with clear low bridge defect

Intuitive SPC Display

Full panel maps and real color images allow engineers to quickly monitor and diagnose problematic areas on the stencil, saving management time and reducing rework costs.

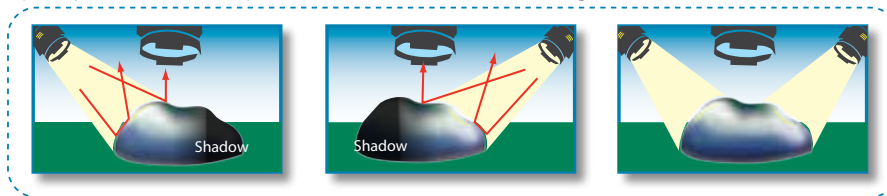
Intelligent Easy Programming Interface

Rapid intelligent 5-step programming interface ensures fast changeovers, minimal idle time and helps reduce operator work load.



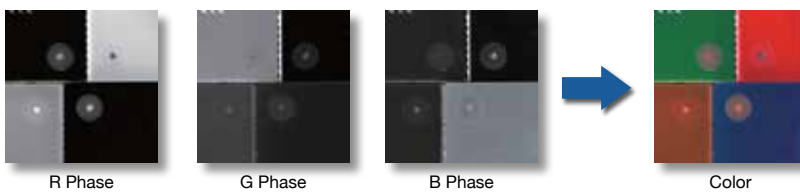
Shadow Free Inspection Technology

Quad/Dual digital projector design and intelligent software ensure the TR7007QI delivers completely shadow-free inspection results and eliminates image noise issues.



Multi-Color Vision for any PCB

Multi-phase color lighting guarantees accurate inspection results on any PCB color and finish combination at high inspection speed.

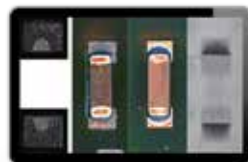


Industry 4.0

TRI's solution for Industry 4.0, YMS 4.0, provides a M2M centralized inspection monitoring and remote access fine tuning throughout the SMT line. Built-in support for SPI, AOI, AXI and ICT systems helps track Alarms and SPC data to simplify production quality monitoring. YMS 4.0 is TRI's Industry 4.0 closed loop software to assure your production line Inspection quality and efficiency.



PRODUCTION ANALYSIS



CENTRALIZED INSPECTION CENTER



REAL TIME SPC TREND

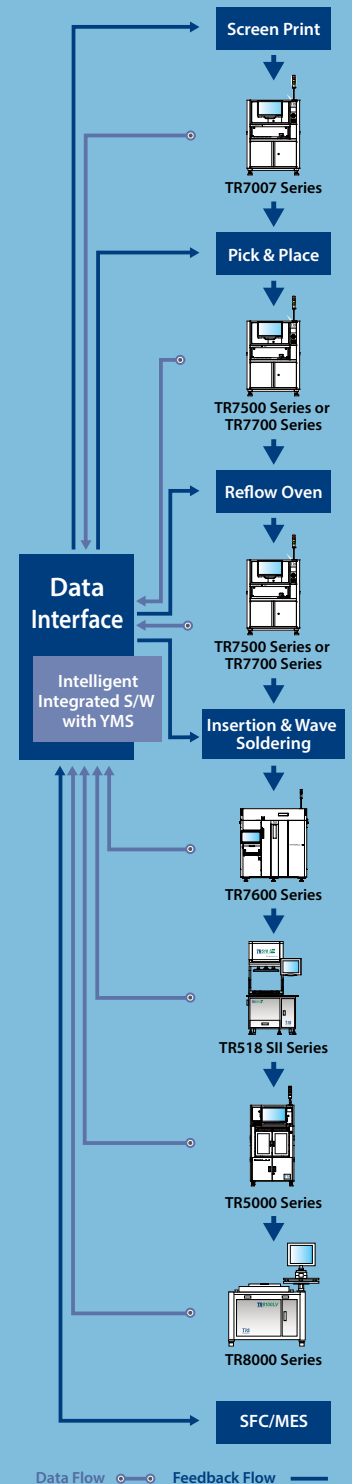
Closed Loop Function

TRI SPI systems share inspection results with connected SMT line equipment to help improve production yields and stabilize production quality while minimizing line stops and reducing production costs.

High Production Value = Maximum Cost Savings

- Industry Leading Inspection Speed
- Early Defect Detection
- 98% Rework Cost Reduction
- Stable and Reliable Results
- Enhanced 100% Defect Coverage

Yield Management System



- Inspection results and data integration
- Real time SPC and production yield management
- Quality reports and closed loop tracking
- Support defect component analysis and improvements
- Knowledge Management (KM)
- Productivity and Quality Management

Optical & Imaging System

Camera Type	4 or 12 MP camera (factory setting)	
Optical Resolution	6 µm or 10 µm or 15 µm (factory setting)	
3D Projection	Quad/Dual Digital Fringe Projectors	
Field of View	4 MP	12 MP
6 µm	n/a	24.4 x 18.4mm (0.96 x 0.72 in.)
10 µm	20.3 x 20.3mm (0.80 x 0.80 in.)	40.8 x 30.7mm (1.61 x 1.21 in.)
15 µm	30.5 x 30.5mm (1.20 x 1.20 in.)	61.2 x 46.1mm (2.41 x 1.81 in.)

Inspection Functions

Defects Detected	Insufficient Paste, Excessive Paste, Shape Deformity, Missing Paste & Bridging
Measurement	Height, area, volume and offset

Inspection Speed

Camera Resolution	4 MP	12 MP Camera Link	12 MP CoaXPress**
Imaging Speed FOV/sec*	3	2	3

* Inspection speed depends on PCB and inspection conditions

** With optional CoaXPress upgrade

Inspection Performance

Volume Repeatability	Calibration Target (at 3σ)	<1% on TRI calibration target
Height Repeatability	Calibration Target (at 3σ) Solder GR&R (± 50% Tolerance)	<1% on TRI calibration target <<10% at 6σ
Height Accuracy	1.5 µm on calibration target	
Optical Resolution	6 µm	10 µm/15 µm
Height Resolution	0.22 µm	0.4 µm
Max. Solder Height	210 µm/420 µm	420 µm/840 µm

Mechanical Stage

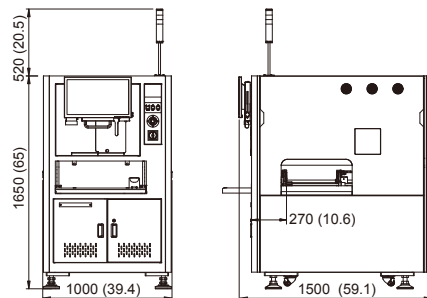
XY-axis ball screw with DSP-based motion controller

XY Resolution	0.5 µm
---------------	--------

PCB and Conveyor System

	TR7007QI
Min. PCB Size	50 x 50 mm (1.97 x 1.97 in.)
Max. PCB Size	6 µm: 330 x 310 mm (13.0 x 12.2 in.) 10/15 µm: 510 x 460 mm (20.1 x 18.1 in.)
PCB Thickness	0.6 - 5 mm (0.02 - 0.20 in.)
PCB Transport Height	880 - 920 mm (34.6 - 36.2 in.)
Max. PCB Weight	3 kg (6.61 lbs)
PCB Carrier/Fixing	Belt/Pneumatic
Clearance	
Top	25 mm
Bottom	40 mm
Edge	3 mm

Dimensions



Unit: mm (in.)

	TR7007QI
Weight	675 kg (1489 lbs)
Power Requirement	200 - 240 VAC, single phase, 50/60 Hz, 3 kVA
Air Requirement	72 psi - 87 psi (5 - 6 bar)

Optional

SPC, Offline Editor, Gerber Tool, Barcode Scanner (linear & 2D) and Support Pins, Closed Loop Function, Yield Management System (YMS 4.0), CoaXPress Module Upgrade, Linear Encoder Module

Headquarters

7F., No.45, Dexing West Rd.,
Shilin Dist., Taipei City
11158, Taiwan
TEL: +886-2-2832-8918
FAX: +886-2-2831-0598
E-Mail: sales@tri.com.tw
http://www.tri.com.tw

Linkou, Taiwan

No.256, Huaya 2nd Rd.,
Guishan Dist., Taoyuan
County 33383, Taiwan
TEL: +886-2-2832-8918
FAX: +886-3-328-6579

Hsinchu, Taiwan

7F., No.47, Guangming 6th
Rd., Zhubei City, Hsinchu
County 30268, Taiwan
TEL: +886-2-2832-8918
FAX: +886-3-553-9786

Shenzhen, China

5F.3, Guangxia Rd.,
Shang-mei-lin Area,
Fu-Tian Dist., Shenzhen,
Guangdong, 518049, China
TEL: +86-755-83112668
FAX: +86-755-83108177
E-mail: shenzhen@cn.tri.com.tw

Suzhou, China

B Unit, Building 4, 78 Xinglin St.,
Suzhou Industrial Park,
215123, China
TEL: +86-512-68250001
FAX: +86-512-68096639
E-mail: suzhou@cn.tri.com.tw

Shanghai, China

Room 6C, Building 14,
470 Guijing Rd., Xuhui Dist.,
Shanghai, 200233, China
TEL: +86-21-54270101
FAX: +86-21-64957923
E-mail: shanghai@cn.tri.com.tw

USA

832 Jury Court, Suite 4,
San Jose, CA 95112 U.S.A
TEL: +1-408-567-9898
FAX: +1-408-567-9288
E-mail: triusa@tri.com.tw

Europe

Gugelstr. 32
90443 Nuremberg
Germany
TEL: +49-9119-401-7827
FAX: +49-9119-400-6181
E-mail: trieuropa@tri.com.tw

Japan

4-26-10 Ishiwara, Sumida-ku,
Tokyo, 130-0011 Japan
TEL: +81-3-6273-0518
FAX: +81-3-6273-0519
E-mail: trijp@tri.com.tw

Korea

No.207 Daewoo-Technopia,
768-1 Wonsi-Dong, Danwon-Gu,
Ansan City, Gyeonggi-Do, Korea
TEL: +82-31-470-8858
FAX: +82-31-470-8859
E-mail: trik@tri.com.tw

Malaysia

C11-1, Ground Floor, Lorong
Bayan Indah 3 Bay Avenue,
11900 Bayan Lepas Penang,
Malaysia
TEL: +604-6461171
E-mail: trimy@tri.com.tw

Specifications are subject to change without notice. Content may not be used as acceptance criteria. All trademarks are the property of their owners.

TRI 德律 TRI INNOVATION

The absence of a product or service name or logo from this list does not constitute a waiver of TRI's trademark or other intellectual property rights concerning that name or logo. All other trademarks and trade names are the property of their owners.

