

TR7007 SII Plus SERIES



- Industry Leading Inspection Speed
- Shadow Free Fringe Pattern Lighting Technology
- Optical Resolution 10 μm or 15 μm
- Linear Motor Design for Stable and Accurate Inspection
- Advanced SPC Functions for Production Quality Monitoring and Evaluation

**3D SOLDER
PASTE INSPECTION**

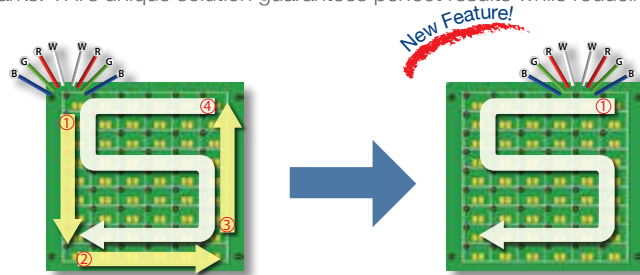
TR7007 SII Plus FEATURES

TR7007 SII Plus

Highly Accurate shadow-free SPI solution with class-leading inspection performance and easy programming brings maximum value to your production line.

Unmatched Speed & Throughput

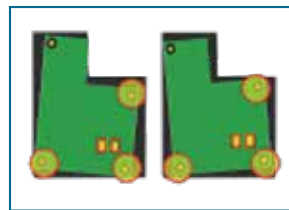
Industry-leading inspection speed using TRI's Dynamic Imaging technology keeps up with the production line beat without slowing down for even the most complex boards with multiple local fiducial marks. TRI's unique solution guarantees perfect results while reducing expensive cycle time.



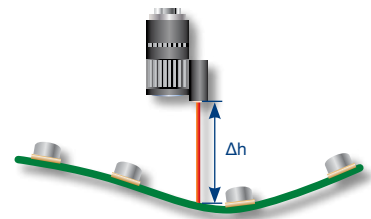
TRI's Color Imaging needs to scan only one Fiducial Mark on every board, saving cycle time.

Stable and Reliable Performance

Fully optimized for maximum stability, the TR7007 SII Plus delivers reliable inspection results 24 hours a day, and automatically compensates for manufacturing tolerances and board warp.

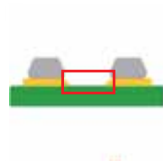


Reliable warp compensation and local fiducial marks guarantee stable results under any conditions.

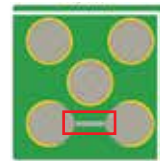


Unique Low Bridge Inspection

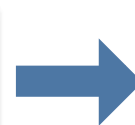
World's first inspection of low solder paste bridges under 30 μm ensures no printing defects are missed, and guarantees accurate results under any conditions.



3D Height Profile cannot reveal low bridges



Top Color View



2D+3D Image with clear low bridge defect

Intuitive SPC Display

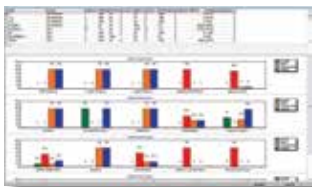
Full panel maps and real color images allow engineers to quickly monitor and diagnose problematic areas on the stencil, saving management time and reducing rework costs.

Intelligent Easy Programming Interface

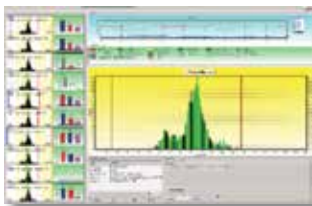
Rapid intelligent 5-step programming interface ensures fast changeovers, minimal idle time and helps reduce operator work load.



SPC



Statistical Report



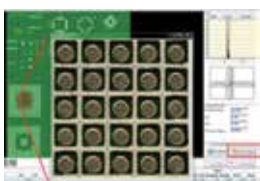
Multi-panel Histogram



Solder Height Distribution



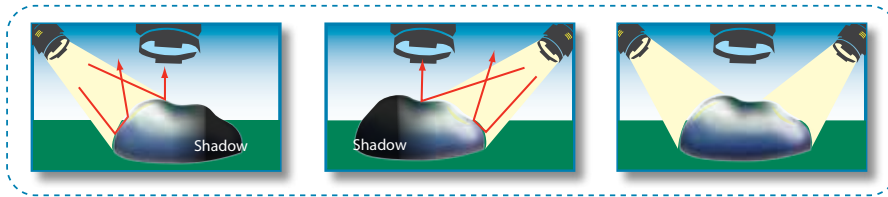
3D Color Image



SPC 2D Real Image Query

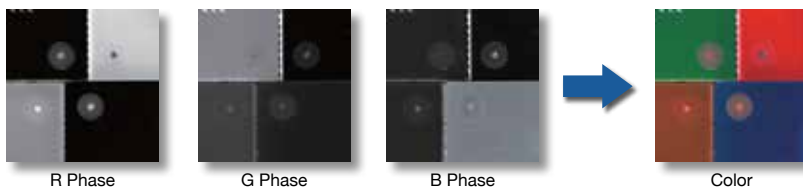
Shadow Free Inspection Technology

Dual projection design and intelligent software ensure the TR7007 SII Plus delivers completely shadow-free inspection results and eliminates problems with specular reflections.



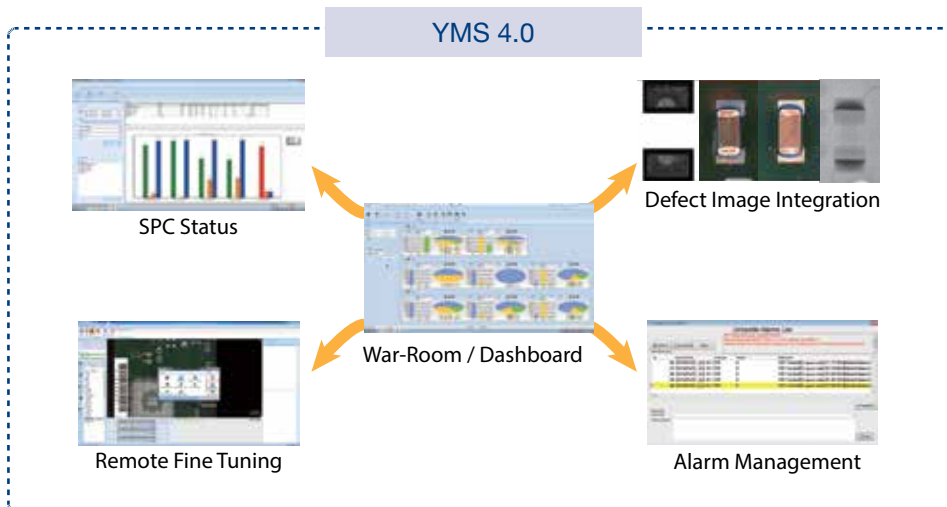
Multi-Color Vision for any PCB

Multi-phase color lighting guarantees accurate inspection results on any PCB color and finish combination, without sacrificing inspection speed.



Industry 4.0 Production Line Integration

YMS 4.0 lets TRI inspection solutions interface and share inspection data with the shop floor system and other inspection machines. With the central console an operator can control, track, analyze and optimize the inspection process across the entire production line and obtain real actionable data to optimize production quality in the Industry 4.0 environment.



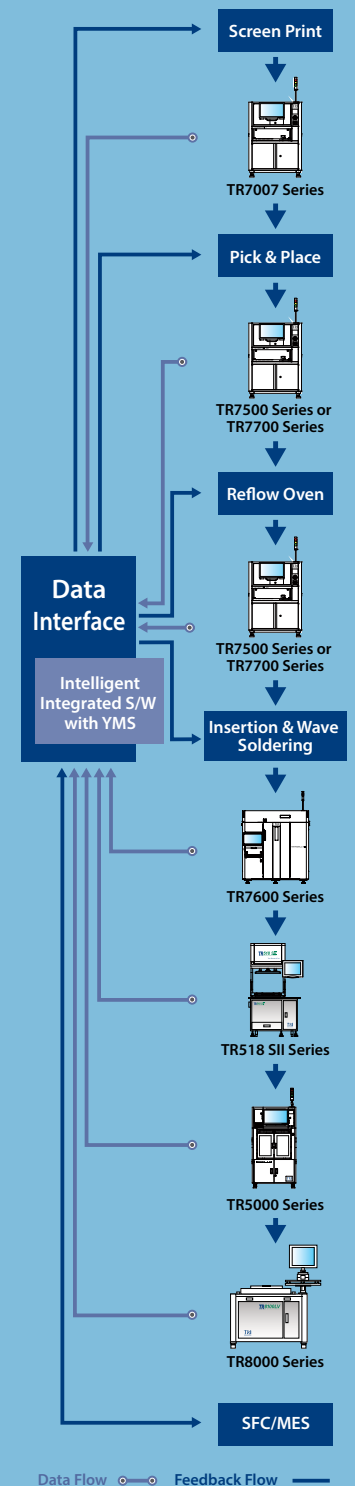
Closed Loop Function

TRI SPI systems share inspection results with connected SMT line equipment to help improve production yields and stabilize production quality while minimizing line stops and reducing production costs.

High Production Value = Maximum Cost Savings

- Industry Leading Inspection Speed • Stable and Reliable Results
- Early Defect Detection • Enhanced 100% Defect Coverage
- 98% Rework Cost Reduction

Yield Management System



- Inspection results and data integration
- Real time SPC and production yield management
- Quality reports and closed loop tracking
- Support defect component analysis and improvements
- Knowledge Management (KM)
- Productivity and Quality Management

Optical & Imaging System

Camera Type	4 Mpx camera	
Optical Resolution	10 µm or 15 µm (factory setting)	
Field of View	10 µm	20.0 x 20.0 mm (0.79 x 0.79 in)
	15 µm	30.0 x 30.0 mm (1.18 x 1.18 in)

Inspection Functions

Defects Detected	Insufficient Paste, Excessive Paste, Shape Deformity, Missing Paste & Bridging
Measurement	Height, area, volume and offset

Mechanical Stage

X-axis linear motor and linear scale with DSP-based motion controller

XY Resolution	0.5 µm
Z Resolution	1 µm

Inspection Speed

10 µm	Up to 90 cm ² /sec
15 µm	Up to 200 cm ² /sec

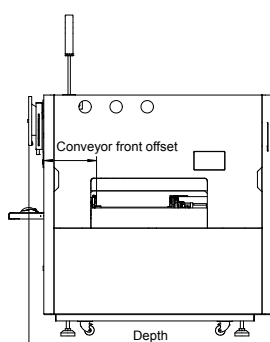
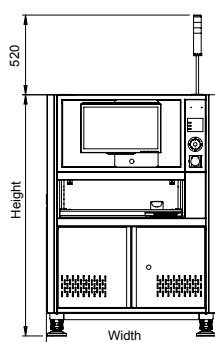
Inspection Performance

Volume Repeatability	Calibration Target (at 3 σ)	<1% on TRI calibration target
Height Repeatability	Calibration Target (at 3 σ)	<1% on TRI calibration target
	Solder GR&R (± 50% Tolerance)	<<10% at 6 σ
Height Resolution	0.4 µm	
Height Accuracy	1.5 µm on calibration target	
Max. Height Range	10 µm	600 µm
	15 µm	550 µm

PCB and Conveyor System

	TR7007 SII Plus	TR7007 SII Plus DL
Min. PCB Size	50 x 50 mm (1.97 x 1.97 in.)	
Max. PCB Size	510 x 460 mm (20.1 x 18.1 in.)	510 x 310 mm x 2 lanes (20.1 x 12.2 in. x 2 lanes)
		510 x 590 mm x 1 lane (20.1 x 23.2 in. x 1 lane)
PCB Thickness	0.6 - 5 mm	
PCB Transport Height	880 - 920 mm (34.6 - 36.2 in.)	
Max. PCB Weight	3 kg (6.61 lbs)	
PCB Carrier/Fixing	Belt/Pneumatic	
Clearance		
Top	25 mm (0.98 in.)	
Bottom	40 mm (1.58 in.)	
Edge	3 mm (0.12 in.)	

Dimensions



	TR7007 SII Plus	TR7007 SII Plus DL
Width	1100 mm (43.3 in.)	1100 mm (43.3 in.)
Depth	1570 mm (61.8 in.)	1770 mm (69.7 in.)
Height	1550 mm (61.0 in.)	1560 mm (61.4 in.)
Conveyor front offset	335 mm (13.2 in.)	335 mm (13.2 in.)
Weight	950 kg (2094 lbs)	1100 kg (2425 lbs)
Power Requirement	200 - 240 VAC, single phase, 50/60 Hz, 3 kVA	
Air Requirement	72 psi - 87 psi (5 - 6 bar)	

Unit : mm

Optional

SPC, Offline Editor, Gerber Tool, Barcode Scanner (linear & 2D) and Support Pins, Closed Loop Function, Dual Lane, Y-Axis Linear Motor, TRI's Yield Management System (YMS 4.0) , YMS Lite

Specifications are subject to change without notice. Content may not be used as acceptance criteria. All trademarks are the property of their owners.

TRI 德律 TRI INNOVATION®

The absence of a product or service name or logo from this list does not constitute a waiver of TRI's trademark or other intellectual property rights concerning that name or logo. All other trademarks and trade names are the property of their owners.



Headquarters

7F., No.45, Dexing West Rd.,
Shilin Dist., Taipei City
11158, Taiwan
TEL: +886-2-2832-8918
FAX: +886-2-2831-0567
E-Mail: sales@tri.com.tw
http://www.tri.com.tw

Linkou, Taiwan

No.256, Huaya 2nd Rd.,
Guishan Dist., Taoyuan
City 33383, Taiwan
TEL: +886-2-2832-8918
FAX: +886-3-328-6579

Hsinchu, Taiwan

7F., No.47, Guangming 6th
Rd., Zhubei City, Hsinchu
County 30268, Taiwan
TEL: +886-2-2832-8918
FAX: +886-3-553-9786

Shenzhen, China

5F.3, Guangxia Rd., Shang-mei-lin
Area, Fu-Tian District, Shenzhen,
Guangdong, 518049, China
TEL: +86-755-83112668
FAX: +86-755-83108177
E-mail: shenzhen@cn.tri.com.tw

Suzhou, China

B Unit, Building 4, 78 Xinglin
St., Suzhou Industrial Park,
215123, China
TEL: +86-512-68250001
FAX: +86-512-68096639
E-mail: suzhou@cn.tri.com.tw

Shanghai, China

Room 6C, Building 14,
470 Guiping Rd., Xuhui Dist.,
Shanghai, 200233, China
TEL: +86-21-54270101
FAX: +86-21-64957923
E-mail: shanghai@cn.tri.com.tw

USA

832 Jury Court, Suite 4,
San Jose, CA 95112, U.S.A.
TEL: +1-408-567-9898
FAX: +1-408-567-9288
E-mail: triusa@tri.com.tw

Europe

O'Brien Strasse 14
91126 Schwabach
Germany
TEL: +49-9122-631-2127
FAX: +49-9122-631-2147
E-mail: trieuropa@tri.com.tw

Japan

2-9-9 Midori, Sumida-ku,
Tokyo, 130-0021 Japan
TEL: +81-3-6273-0518
FAX: +81-3-6273-0519
E-mail: trijp@tri.com.tw

Korea

No.207 Daewoo-Technopia, 768-
1 Wonsi-Dong, Danwon-Gu,
Ansan City, Gyeonggi-Do, Korea
TEL: +82-31-470-8858
FAX: +82-31-470-8859
E-mail: trikr@tri.com.tw

Malaysia

C11-1, Ground Floor, Lorong
Bayan Indah 3 Bay Avenue,
11900 Bayan Lepas Penang,
Malaysia
TEL: +604-6461171
E-mail: trimy@tri.com.tw