

TR7500QE SERIES

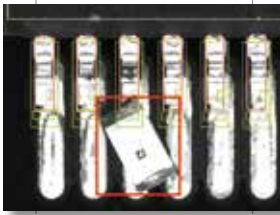


- High Accuracy Stop-and-Go 2D+3D AOI
- Total Multi-angle and 3D Coverage
- Quad Digital Fringe Pattern Technology
- High Resolution Angled Inspection

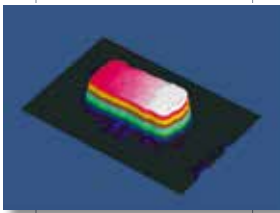
**AUTOMATED
OPTICAL INSPECTION**

TR7500QE FEATURES

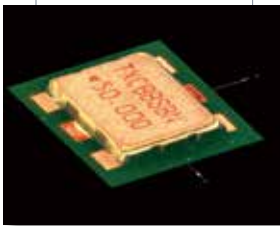
Defects



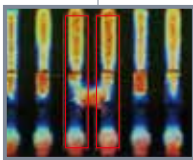
Foreign Material



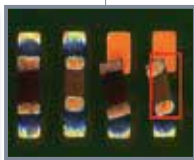
Lifted Components



Metal-cased Reflective Components



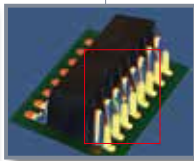
Bridging



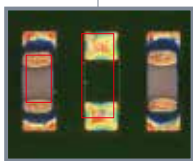
Skew



No Solder



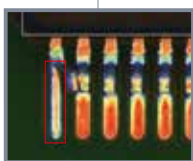
Lifted Lead



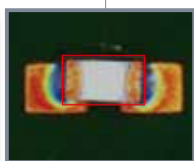
Missing



Tombstoning



Bent Pin



Upside Down

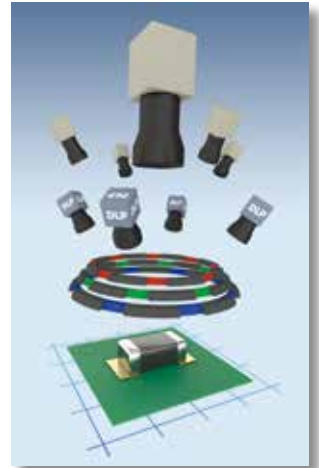
TR7500QE - The Ultimate 2D+3D AOI Solution

The TR7500QE Automated Optical Inspection combines the latest multi-angle 2D and 3D technologies based on digital quad fringe pattern projection to revolutionize PCB assembly inspection. Save up to 50% of cycle time with the optional CoaXPRESS imaging upgrade!

Maximum Precision with 4-way Projection

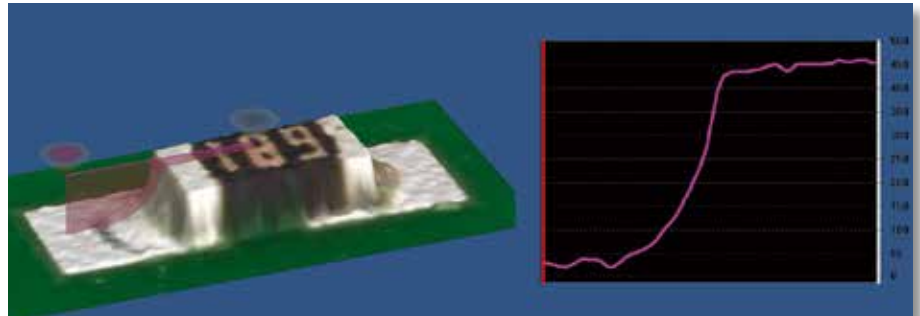
TR7500QE combines 5 high resolution cameras and quad multi-angle digital fringe pattern projection for best inspection coverage.

- **1 Top + 4 Side View Cameras**
- **4-way Adaptive Digital Fringe Projection**
- **40 mm Height Inspection Range**
- **Optional High Speed CoaXPRESS Upgrade**



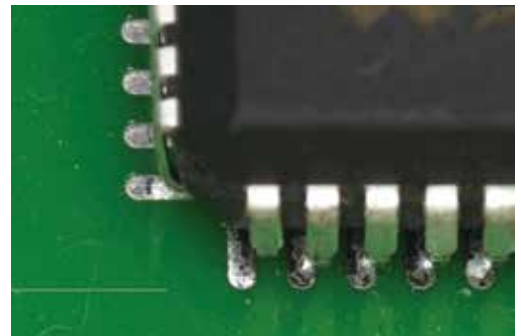
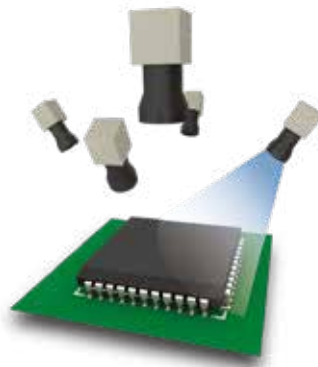
Complete 3D PCB Assembly Inspection

TR7500QE ensures all visible solder joints meet IPC specifications or your chosen criteria.



Reveal Hidden Defects in Clear Angle View Images

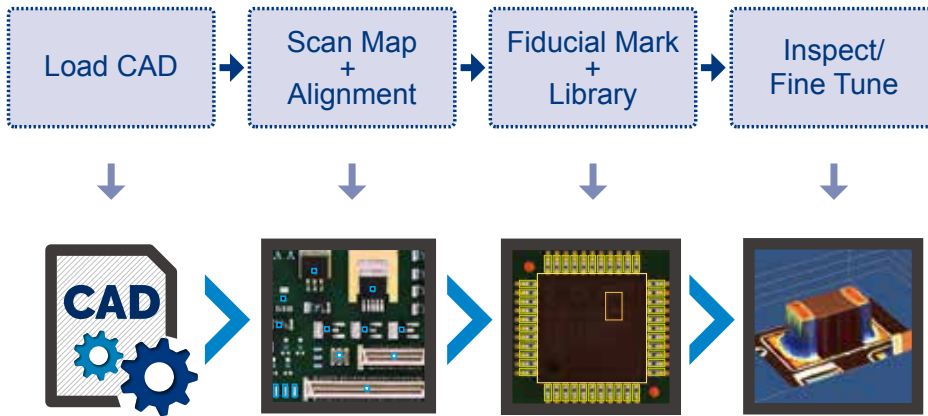
Angle view images reveal soldering issues from another perspective, not available in single camera systems, and help eliminate an important source of defects.



Hidden soldering defects revealed in side view

From CAD to Inspection in Minutes

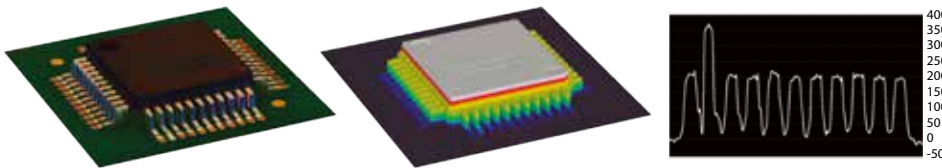
TRI's intuitive software and smart component libraries streamline new product introduction in a few simple steps.



TRI AOI programming flow in a few simple steps

Intuitive Inspection Results

Reviewing defects on TR7500QE is a breeze with intuitive height profile visualization.



Easy to identify defects shown in specialized display modes

Yield Management System 4.0

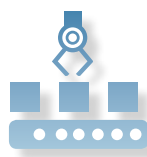
YMS 4.0 provides a M2M centralized inspection monitoring and remote access fine tuning throughout the SMT line. Built-in support for SPI, AOI, AXI and ICT systems helps track Alarms and SPC data to simplify production quality monitoring. YMS 4.0 is TRI's Industry 4.0 closed loop software to assure your production line inspection quality and efficiency.



INCREASE EFFICIENCY



REDUCE MANPOWER

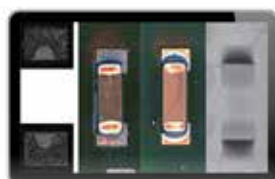


LEANER PRODUCTION LINE

The Yield Management System allows operators to aggregate information from individual TRI inspection systems for statistical analysis of production line defect rates, reviewing and fine-tuning inspection results, and identifying component defect trends and emerging production issues.



PRODUCTION ANALYSIS

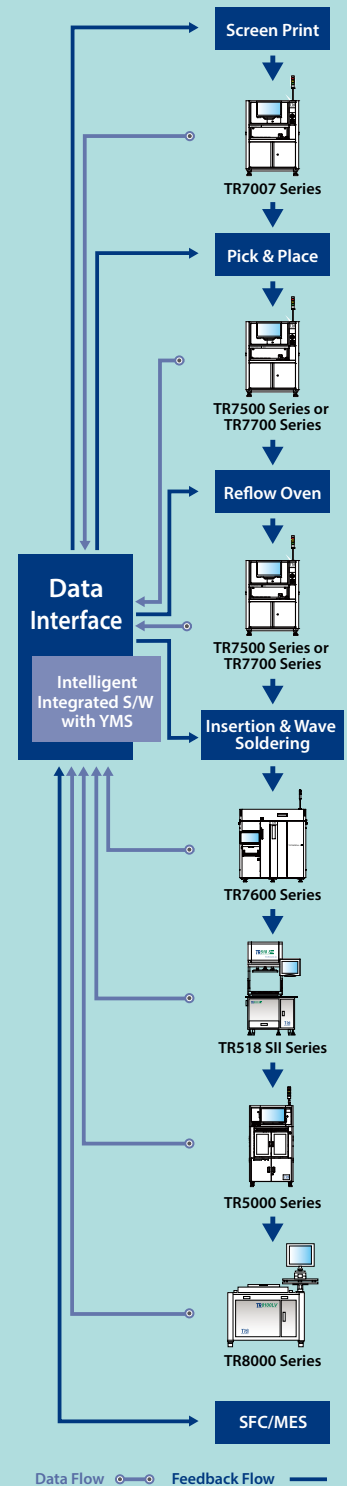


CENTRALIZED INSPECTION CENTER



REAL TIME SPC TREND

Yield Management System



- Inspection results and data integration
- Real time SPC and production yield management
- Quality reports and closed loop tracking
- Support defect component analysis and improvements
- Knowledge Management (KM)
- Productivity and Quality Management

Optical & Imaging System

Top View Camera	12 MP camera	
Side View Camera	4 x 6.5 Mpix camera	
Lighting	Multi-phase true color LED, Coaxial lighting	
3D Projection	Quad Digital Fringe Projectors	
Optical Resolution	10 μ m	15 μ m
3D Height Range	0 - 40 mm	
Imaging Method	Stop-and-Go	

Imaging/Inspection Speed*

	10 μ m	15 μ m
Standard	13.5 cm ² /sec	30 cm ² /sec
CoaXPress	23 cm ² /sec	40 cm ² /sec

* The inspection time will vary depending on the configuration

Pre-/Post-Reflow Inspection Functions

Component	Missing, Tombstoning, Billboarding, Polarity, Rotation, Shift, Wrong Marking (OCV), Defective, Upside Down, Extra Component, Foreign Material
Solder Joint	Solder Fillet Height, Solder Volume %, Excess Solder, Insufficient Solder, Bridging, Through-hole Pins, Lifted Lead, Golden Finger Scratch/ Contamination

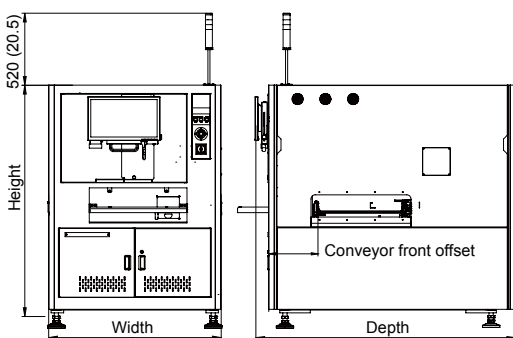
X-Y-Z Table & Control

X Axis	Ball screw + AC servo with motion controller (Linear motor optional)
Y Axis	Dual driven ball screw + AC servo with motion controller
Z Axis	Ball screw + AC servo with motion controller
X-Y-Z Axis Resolution	1 μ m

PCB & Conveyor System

	TR7500QE	TR7500L QE	TR7500QE DL
Min. PCB Size	50 x 50 mm (1.97 x 1.97 in.)		
Max. PCB Size	510 x 460 mm (20.08 x 18.11 in.)	660 x 610 mm (25.98 x 24.02 in.)	510 x 310 mm x 2 lanes (20.08 x 12.20 in. x 2 lanes) 510 x 590 mm x 1 lane (20.08 x 23.23 in. x 1 lanes)
PCB Thickness	0.6 - 5 mm (24 - 196 mils)		
PCB Transport Height	880 - 920 mm (34.65 - 36.22 in.)		
Max. PCB Weight	3 kg (6.61 lbs)		
PCB Carrier/Fixing	Step motor driven		
Clearance			
Top	50 mm (1.97 in.)		
Bottom	40 mm (1.57 in.)		
Edge	3 mm (0.12 in.) [5 mm (0.2 in.) optional]		

Dimensions



	TR7500QE	TR7500L QE	TR7500QE DL
Width	1100 mm (43.3)	1250 mm (49.2)	1100 mm (43.3)
Depth	1730 mm (68.1)	1880 mm (74.0)	1830 mm (72.0)
Height	1750 mm (68.9)		
Conveyor front offset	355 mm (14)		
Weight	920 kg (2028 lbs)	1170 kg (2579 lbs)	950 kg (2094 lbs)
Power Requirement	200 - 240 VAC, single phase, 50/60 Hz, 3 kVA		
Air Requirement	72 psi - 87 psi (5 - 6 bar)*	72 psi - 87 psi (5 - 6 bar)	

* TR7500QE&TR7500L QE Require compressed air only if compressed air type stopper set is installed

Unit : mm (in.)

Options

Barcode Scanner, Repair Station, Offline Editor, OCR, Yield Management System (YMS 4.0), 3D Laser, CoaXPress Module Upgrade

Specifications are subject to change without notice. Content may not be used as acceptance criteria. All trademarks are the property of their owners.

TRI 德律 TRI INNOVATION

The absence of a product or service name or logo from this list does not constitute a waiver of TRI's trademark or other intellectual property rights concerning that name or logo. All other trademarks and trade names are the property of their owners.



Headquarters

7F., No.45, Dexing West Rd.,
Shilin Dist., Taipei City
11158, Taiwan
TEL: +886-2-2832-8918
FAX: +886-2-2831-0598
E-Mail: sales@tri.com.tw
http://www.tri.com.tw

Linkou, Taiwan

No.256, Huaya 2nd Rd.,
Guishan Dist., Taoyuan
City 33383, Taiwan
TEL: +886-2-2832-8918
FAX: +886-3-328-6579

Hsinchu, Taiwan

7F., No.47, Guangming 6th
Rd., Zhubei City, Hsinchu
County 30268, Taiwan
TEL: +886-2-2832-8918
FAX: +886-3-553-9786

Shenzhen, China

5F.3, Guangxia Rd.,
Shang-mei-lin Area,
Fu-Tian Dist., Shenzhen,
Guangdong, 518049, China
TEL: +86-755-83112668
FAX: +86-755-83108177
E-mail: shenzhen@cn.tri.com.tw

Suzhou, China

B Unit, Building 4, 78 Xinglin St.,
Suzhou Industrial Park,
215123, China
TEL: +86-512-68250001
FAX: +86-512-68096639
E-mail: suzhou@cn.tri.com.tw

Shanghai, China

Room 6C, Building 14,
470 Guiping Rd., Xuhui Dist.,
Shanghai, 200233, China
TEL: +86-21-54270101
FAX: +86-21-64957923
E-mail: shanghai@cn.tri.com.tw

USA

832 Jury Court, Suite 4,
San Jose, CA 95112 U.S.A
TEL: +1-408-567-9898
FAX: +1-408-567-9288
E-mail: triusa@tri.com.tw

Europe

Gugelstr. 32
90443 Nuremberg
Germany
TEL: +49-9119-401-7827
FAX: +49-9119-400-6181
E-mail: trieurope@tri.com.tw

Japan

4-26-10 Ishiwara, Sumida-ku,
Tokyo, 130-0011 Japan
TEL: +81-3-6273-0518
FAX: +81-3-6273-0519
E-mail: trijp@tri.com.tw

Korea

No.207 Daewoo-Technopia,
768-1 Wonsi-Dong, Danwon-Gu,
Ansan City, Gyeonggi-Do, Korea
TEL: +82-31-470-8858
FAX: +82-31-470-8859
E-mail: trik@tri.com.tw

Malaysia

C11-1, Ground Floor, Lorong
Bayan Indah 3 Bay Avenue,
11900 Bayan Lepas Penang,
Malaysia
TEL: +604-6461171
E-mail: trimy@tri.com.tw